

Ventilation Tubes

Silicone - Titanium - Fluoroplastic



Quality you can rely on

30
Years
SPIGGLE & THEIS
1994 - 2024



Ventilation Tubes

Ventilation Tubes

Today, there is a wide range of different models in **various materials**. It is not easy for the user to make a choice, particularly as many **types** are very **similar**. Personal experience and preferences play an important role in the decision making process.

At **SPIGGLE & THEIS** you will find the ventilation tubes that you are looking for.



Ventilation Tubes

Various materials



Titanium

- Lumen and flanges are micro-polished to prevent adhesions of secretion
- Especially light



Silicone

- Soft material, which can be easily finished if necessary



Fluoroplastic (PTFE)

- Adhesive material properties prevent too fast closure of the tube

All our ventilation tubes are **biocompatible** and provide excellent drainage results. The ventilation tubes come in single and sterile packaging.

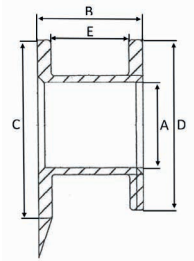
There are three categories to differentiate between:

- Duration “**short**” (e.g. Shepard): approx 1-6 months
- Duration “**medium**” (e.g. collar button): approx 6-12 months
- Duration “**long**” (e.g. T-tube): approx 12 months or longer; must be removed by a physician

Ventilation Tubes

Titanium, 10 pieces/box, sterile

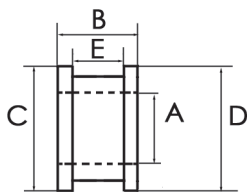
Titanium



Self cutting, 10 pieces / box

- Typical medium-term ventilation tube
- Time-saving, separate myringotomy blade is no longer needed
- Easy positioning
- Familiar collar button design

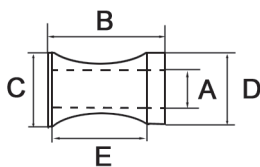
Art.-No.	Feature	(A) Inner Ø (mm)	(B) Length (mm)	(C) Inner edge Ø (mm)	(D) Outer edge Ø (mm)	(E) Edge distance (mm)
10125SC	cutting edge	1.25	1.55	2.5	2.5	1.15



Collar button, 10 pieces / box

- Standard medium-term ventilation tube
- Classic design

Art.-No.	Feature	(A) Inner Ø (mm)	(B) Length (mm)	(C) Inner edge Ø (mm)	(D) Outer edge Ø (mm)	(E) Edge distance (mm)
10076		0.76	1.49	1.57	1.97	1.01
10100		1.00	1.55	2.25	2.25	1.15
10100F	with wire	1.00	1.55	2.25	2.25	1.15
10125		1.25	1.55	2.50	2.50	1.15
10125F	with wire	1.25	1.55	2.50	2.50	1.15
10150		1.50	1.55	2.75	2.75	1.15
10150F	with wire	1.50	1.55	2.75	2.75	1.15



Shepard, 10 pieces / box

- Short-term ventilation tube
- Classic design

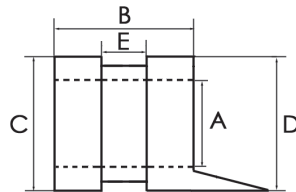
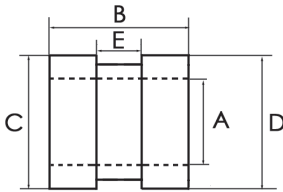
Art.-No.	Feature	(A) Inner Ø (mm)	(B) Length (mm)	(C) Inner edge Ø (mm)	(D) Outer edge Ø (mm)	(E) Edge distance (mm)
101100		1.00	2.20	2.50	2.50	1.30
101100F	with wire	1.00	2.20	2.50	2.50	1.30
101125		1.25	2.20	2.50	2.50	1.30
101125F	with wire	1.25	2.20	2.50	2.50	1.30



Ventilation Tubes

Silicone, 10 pieces/box, sterile

Silicone



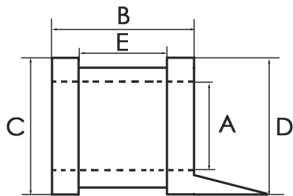
Donaldson, 10 pieces / box

- Short-term and medium-term ventilation tube
- Flange design prevents migration and extrusion
- Also available with tab for easier insertion and removal

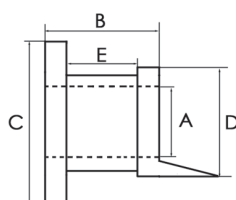
Art.-No.	Feature	(A) Inner \varnothing (mm)	(B) Length (mm)	(C) Inner edge \varnothing (mm)	(D) Outer edge \varnothing (mm)	(E) Edge distance (mm)
103000		1.14	2.20	2.40	2.40	0.80
103010	with tab	1.27	2.10	2.90	2.90	1.40



Typ I



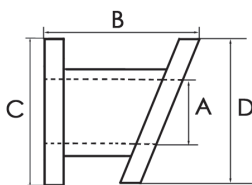
Typ II



Paparella I+II, 10 pieces / box

- Medium-term ventilation tube
- Notched inner flange is designed for easier insertion in a smaller incision
- Two different sizes available
- With tab for easier insertion and removal

Art.-No.	Feature	(A) Inner \varnothing (mm)	(B) Length (mm)	(C) Inner edge \varnothing (mm)	(D) Outer edge \varnothing (mm)	(E) Edge distance (mm)
103300	Typ I	1.14	2.20	2.40	2.10	1.10
103310	Typ II	1.42	2.20	4.40	2.70	1.10



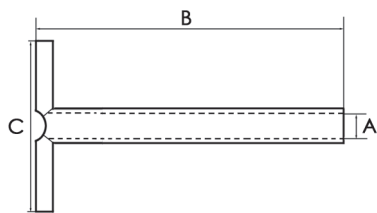
Armstrong, 10 pieces / box

- Medium-term ventilation tube
- Bevelled inner flange corresponds to the angle of the tympanic membrane

Art.-No.	Inner \varnothing (mm)
103400	1.10

Ventilation Tubes

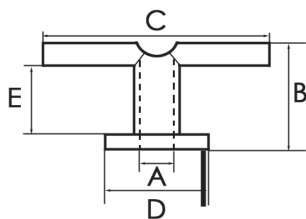
Silicone, 10 pieces/box, sterile



T-Tube, 10 pieces / box

- Long-term ventilation tube
- Shafts and flanges can be partly shortened
- Soft flanges open out after insertion into ear drum
- Opened flanges prevent premature loss
- Proven and popular design

Art.-No.	(A) Inner \varnothing (mm)	(B) Length (mm)	(C) Inner edge (mm)
103100	1.14	12.0	9.83
103150	1.14	4.8	7.90



Grommet T-Tube, 10 pieces / box

- Long-term ventilation tube
- With integral tab for ease of insertion and removal
- Soft flanges open out after insertion into ear drum
- Opened flanges prevent premature loss

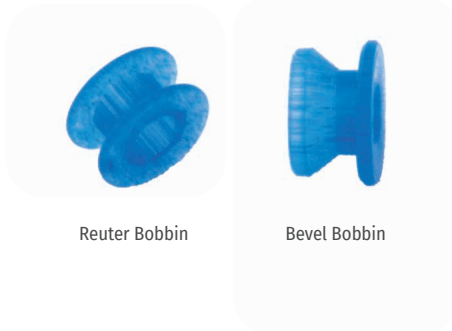
Art.-No.	Feature	(A) Inner \varnothing (mm)	(B) Length (mm)	(C) Inner edge (mm)	(D) Outer edge (mm)	(E) Edge distance (mm)
103200	with tab	1.27	3.50	6.40	3.80	2.40



Ventilation Tubes

Fluoroplastic, 10 pieces/box, sterile

Fluoroplastic (PTFE)

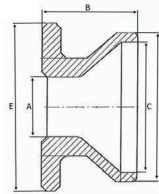


Reuter Bobbin

Bevel Bobbin

Reuter Bobbin and Bevel Bobbin, 10 pieces / box, sterile

- Medium-term ventilation tube

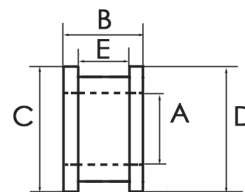


Art.-No.	Type	Material	(A) Inner \varnothing (mm)	(B) Length (mm)	(C) Inner \varnothing (mm)	(D) Inner edge \varnothing (mm)	(E) Outer edge \varnothing (mm)
104311	Bevel	Fluoroplastic	1.10	1.8	2.4	2.75	3.1
104414	Reuter	Fluoroplastic	1.14	1.5		2.8	2.8



Collar button, 10 pieces / box, sterile

- Medium-term ventilation tube
- Proven and popular design
- Three different inner diameters



Art.-No.	Feature	(A) Inner \varnothing (mm)	(B) Length (mm)	(C) Inner edge \varnothing (mm)	(D) Outer edge \varnothing (mm)	(E) Edge distance (mm)
104100		1.00	2.1	2.70	2.70	1.3
104100F	with wire	1.00	2.1	2.70	2.70	1.3
104125		1.25	2.1	2.95	2.95	1.3
104125F	with wire	1.25	2.1	2.95	2.95	1.3
104150		1.50	2.1	3.20	3.20	1.3
104150F	with wire	1.50	2.1	3.20	3.20	1.3

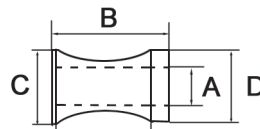
Ventilation Tubes

Fluoroplastic, 10 pieces/box, sterile



Shepard, 10 pieces / box, sterile

- Short-term ventilation tube
- Proven and popular design

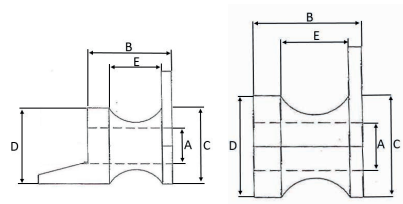


Art.-No.	Feature	Material	(A) Inner \varnothing (mm)	(B) Length (mm)	(C) Inner edge \varnothing (mm)	(D) Outer edge \varnothing (mm)
104115		Fluoroplastic	1.15	2.4	2.4	2.4
104115F	with wire	Fluoroplastic	1.15	2.4	2.4	2.4



Shah, 10 pieces / box, sterile

- Medium-term ventilation tube
- Wedge shaped inner flange for easier insertion



Art.-No.	Feature	Material	(A) Inner \varnothing (mm)	(B) Length (mm)	(C) Inner edge \varnothing (mm)	(D) Outer edge \varnothing (mm)	(E) Edge Distance (mm)
104200	with tab	Fluoroplastic	1.14	2.70	2.36	2.36	1.78
104210		Fluoroplastic	1.14	2.54	2.36	2.36	1.64



Ventilation Tubes

Insertion instruments for ventilation tubes, non-sterile



Universal ventilation tube inserter

- With irrigation channel
- Non-sterile

10-758-00



Hartmann ear forceps

- Serrated
- Self-closing
- Straight
- 0.8 x 4.0 mm
- 8 cm
- Non-sterile

10-701-00



Ventilation tube inserter with mandrels

- Inserter for plastic ventilation tubes
- One each mandrel for ventilation tubes with 1.00 mm and 1.2 mm diameter
- Non-sterile

10-759-00



T-tube inserter

- For T-tubes 6, 9 and 12 mm length
- Non-sterile

Art.-No.

10-760-00

1316012

Feature

Dismountable

Non-dismountable

If you cannot find your model of preference, please contact your SPIGGLE & THEIS distributor.

